

**HUBTEX.**

WE CREATE THE UNIQUE



MAX X  
45

**WE  
CREATE  
THE  
UNIQUE**



---

HUBTEX stands for innovation and quality: As specialist for transport and handling of long, heavy bulk goods we set new standards with the flexibility and multi-functionality of our vehicles. We overcome clients operational challenges through engineering innovation. The close collaboration with our clients and suppliers is the base permitting this achievement. As a consequence, we meet all customer-specific requirements in the development of new vehicles.

---

**HUBTEX.**  
WE CREATE THE UNIQUE



HUBTEX is an international market-leading company for special constructions of industrial trucks, multi-directional side loaders and special appliances for the transport of long and heavy bulk goods.

Our vehicles deliver efficient material flow and product handling, within narrow work processes. HUBTEX develops vehicles for all customer requirements, supported by over 400 dedicated employees, focussed on delivering the best for customers every day.

## HUBTEX AT GLANCE

<b>Main Office</b>	Fulda, Germany
<b>Employees</b>	Approx. 440, more than 50 in the development and 30 trainees
<b>Range of services</b>	Vehicle construction on the highest level of engineering, 70 series types and special-purpose vehicles
<b>Main branches</b>	Aluminium, Automotive, Building Materials, Mining, Sheet metal, Coils, Electronics, Disposal, Final disposal, Foundry, Glass, Wood, Plastics, Aviation, Metal, Paper, Tyres, Heavy-duty, Textile, Tool change, Wind and solar energy
<b>Sales</b>	15 branches and cooperation with sales agents all over the world
<b>Service</b>	Trained installers and around over 60 service constantly offer our quality service

---

# Appreciative working environment and respectful collaboration

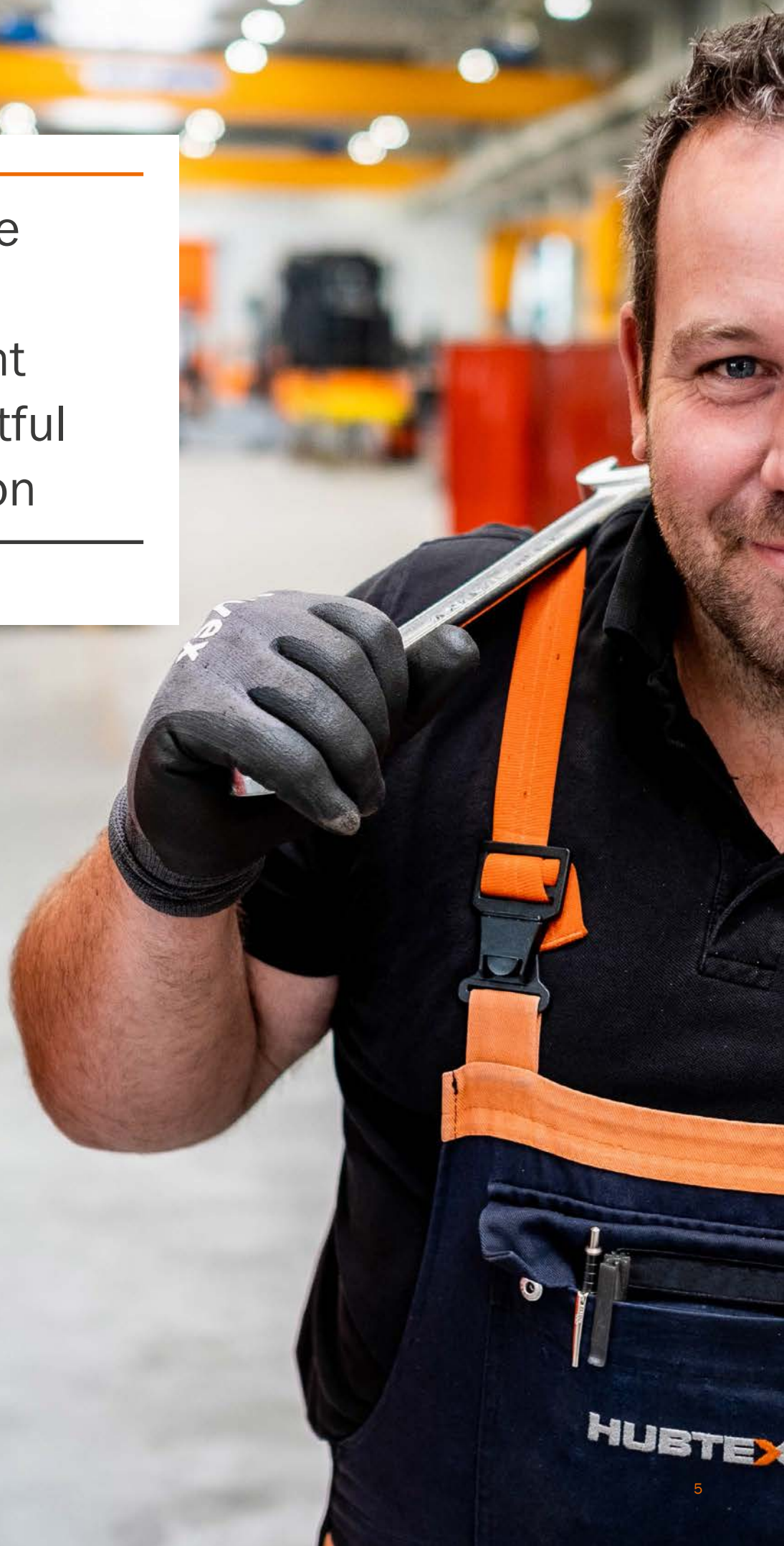
---

## MAIN COMPONENTS OF OUR CORPORATE CULTURE

We always communicated in an open, honest and clear way.

We know that the success of HUBTEX depends on the skill and motivated employees.

That's why we create a working environment in which their own initiative, creative ideas and responsible actions are delivered and promoted.





We offer a solid foundation to the next generation to build up a successful future. The trainees at HUBTEX are normally integrated into the company as fixed employees after their successful conclusion of the training period. This way we address the requirements in terms of skilled workers and unify the existing know-how within our company. Thanks to internal and external training and further training measures we additionally promote the competences acquired during the training.



## **TRAINING – ABSOLUTE PRIORITY FOR HUBTEX**

At HUBTEX we offer trainings for the following professions:

- > *Industrial manager (m/f/o)*

---

- > *Industrial mechanic (m/f/o)*

---

- > *Electronics installer (m/f/o)*

---


---

Our overall  
know-how  
makes us  
the market-leader

---

**APART FROM THE DESIGN,  
TECHNOLOGICAL DEVELOPMENTS  
ARE ESSENTIAL COMPONENTS  
OF OUR COMPANY**

**TECHNO  
LOGY  
AND  
DESIGN**



...of a solid foundation to the next generation to build up a successful future. The trainees at HUBTEX are normally integrated into the company as fixed employees after their successful conclusion of the training period. This way we address the requirements in terms of skilled workers and unify the existing know-how within our company. Thanks to internal and external training and further training measures we additionally promote the competences acquired during the training.



# TECHNOLOGY AND DESIGN

TRAINING – ABSOLUTE PRIORITY FOR HUBTEX

At HUBTEX we offer training for the following professions:

- > Industrial manager (m/f/o)
- > Industrial mechanic (m/f/o)
- > Electronics installer (m/f/o)



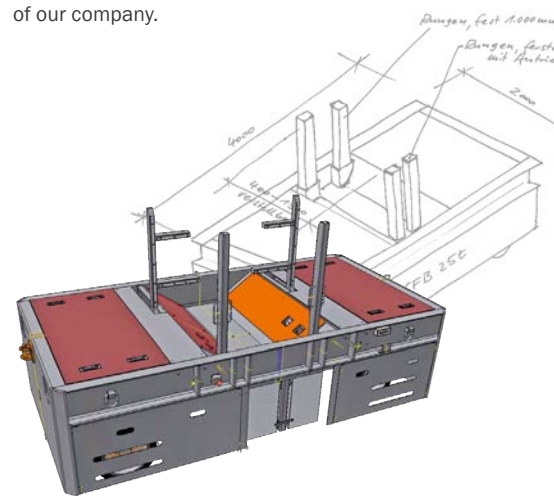
---

# Our overall know-how makes us the market-leader

---

**APART FROM THE DESIGN, TECHNOLOGICAL DEVELOPMENTS ARE ESSENTIAL COMPONENTS OF OUR COMPANY**

Over 50 employees work at HUBTEX in the department of mechanical engineering and electric technology. This figure alone shows that the technological development of vehicles is an essential component of our company.



Our development department has already been involved in the concept and offering phase: If a series-manufactured vehicles reach their limits, we develop tailor-made solutions. And we are ready to face the challenges of the future requirements: Our experts regularly attend qualification and further training measures to comply with the long-term requirements in the industrial age 4.0.

This way we face the challenge of increasing complexity of the tasks of the engineering sector in direct connection with the increasing digitalisation in our production and vehicle development areas.

---

# Our success factors: quality management and occupational safety

---

To produce vehicles of the highest quality level, we mainly focus on our processes – and we do this from the entry of goods through all production phase until the inspection and delivery of the vehicles. At HUBTEX, the production meets the special quality requirements in the fields of aeronautics and nuclear engineering. After their production process, all our appliances are subject to all-comprising safety-related tests. In this context, we thoroughly inspect and document check the entire vehicle specification.



- ISO 9001:2008

---

- Producer qualification  
“Welding“ according to  
DIN EN ISO 3834-2,  
DIN 18800-7, Class E,  
EN 1090, EXC 3

---

- Certificate  
„Sicher mit System“  
(systematically safe)

---

---

Individual special  
vehicles  
Manifold  
production options

---





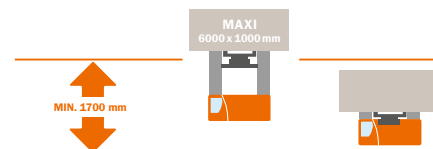
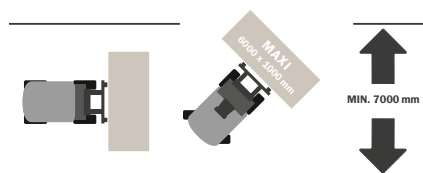
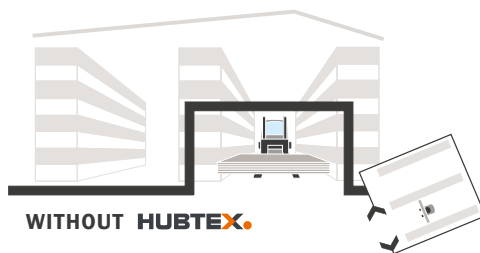
**UP TO 100% MORE STORAGE AREA**

**RAPID, SAFE AND EFFICIENT**

**REDUCED DAMAGE OF THE GOODS**

With the side loaders of HUBTEX it is very easy to traverse narrow aisles without any problems. The distances between the rack rows can be reduced to a minimum. This creates the space required for other rack rows. By using the vehicles by HUBTEX, the existing storage areas can be utilised in an ideal way. The result: In many case even the storage capacity may be increased.

## HUBTEX VEHICLES SOLVE ALL HANDLING TASKS



Long or heavy loads with carrying capacities between 1,5 and 20,0 tons for big-volume capacities

**HUBTEX.**

For long and heavy bulk goods

---

The right product  
for every task

---

---

#### Electrical multidirectional sideloaders

Our multidirectional sideloaders with electrical drive of the carrying capacity classes from 1,5 to 50,0 tons are suitable for the handling of long bulk loads in narrow rack aisles or in the freely movable internal and external space – their options of use are maximised.

#### OUR PRODUCTS

# INNOVATING SPECIAL SOLUTIONS

---

#### Electric multidirectional counterbalance forklift truck

Our universal talent FluX guarantees a safe transport of goods and personnel in the internal or external space. The electric drives and the patented drive system HX ensure an optimal manoeuvrability and a maximum level of efficiency

The compact four-way side loader in the carrying capacity class up to 4.5 t is often used in the external warehouses of the building material, wood and steel industries. The cabin has an ergonomic concept and offers a high level of comfort and a perfect all-round visibility.



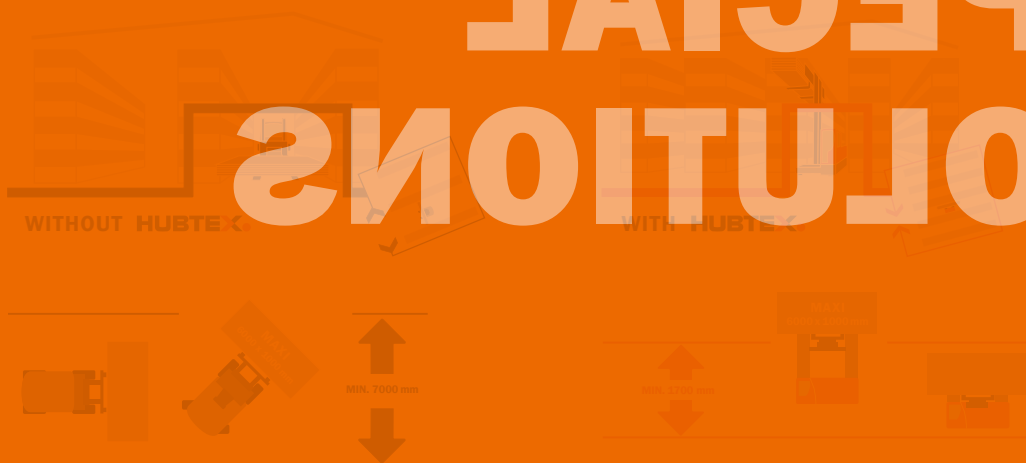
- UP TO 100% MORE STORAGE AREA
- RAPID, SAFE AND EFFICIENT
- REDUCED DAMAGE OF THE GOODS

With the side loaders of HUBTEX it is very easy to traverse narrow aisles without any problems. The distances between the rack rows can be reduced to a minimum. This creates the space required for other rack rows. By using the vehicles by HUBTEX, the existing storage areas can be utilised in an ideal way. The result: In many case even the storage capacity may be increased.

OUR PRODUCTS

# INNOVATING SPECIAL SOLUTIONS

HUBTEX VEHICLES SOLVE ALL HANDLING TASKS



Long or heavy loads with carrying capacities between 1,5 and 20,0 tons for big-volume capacities

**HUBTEX**

For long and heavy bulk goods

---

# The right product for every task

---

## Electrical multidirectional sideloaders

Our multidirectional sideloaders with electrical drive of the carrying capacity classes from 1,5 to 50,0 tons are suitable for the handling of long bulk loads in narrow rack aisles or in the freely movable internal and external space – their options of use are maximised.

---

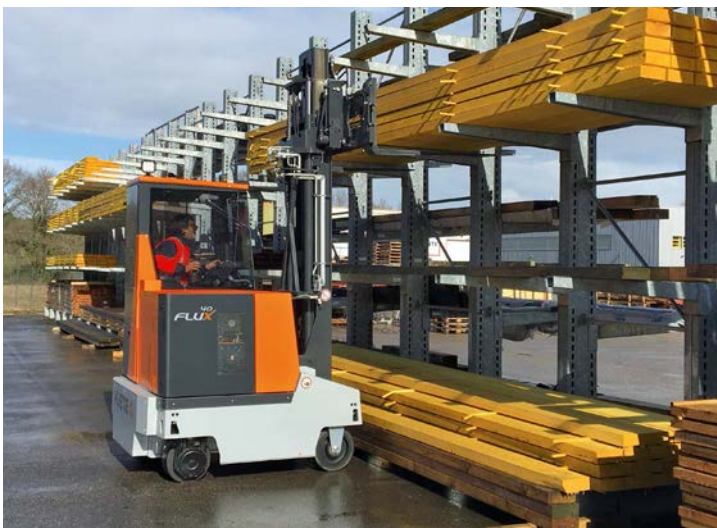
## Electric multidirectional counterbalance forklift truck

Our universal talent FluX guarantees a safe transport of long goods and pallets either in the internal or external area. New electric drives and the patented drive system HX ensure an optimal manoeuvrability and a maximum level of efficiency

---

## Diesel/gas four-way side loaders

The compact four-way side loader in the carrying capacity class up to 4.5 t is often used in the external warehouses of the building material, wood and steel industries. The cabin has an ergonomic concept and offers a high level of comfort and a perfect all-round visibility.





---

### Picking systems

During the picking operations in the warehouse and in the production area, the industrial trucks of HUBTEX must meet very different requirements. Their core task, the safe transport of big-volume wood materials, profiles and plate goods is delivered with ease and simplicity – even in the storage environment.



---

### Reach trucks

The reach trucks by HUBTEX combine compact design and high carrying capacities. They are perfectly adequate for the transport of heavy loads in narrow lines. Energy-efficient controls permit long battery use cycles and elevated handling services.



---

### Heavy load transport vehicles

Loads are getting heavier, bigger and more difficult to handle. This makes the transport of heavy loads more and more challenging. HUBTEX is a specialist supplier for high-quality and cost-efficient solutions with high truck availability.



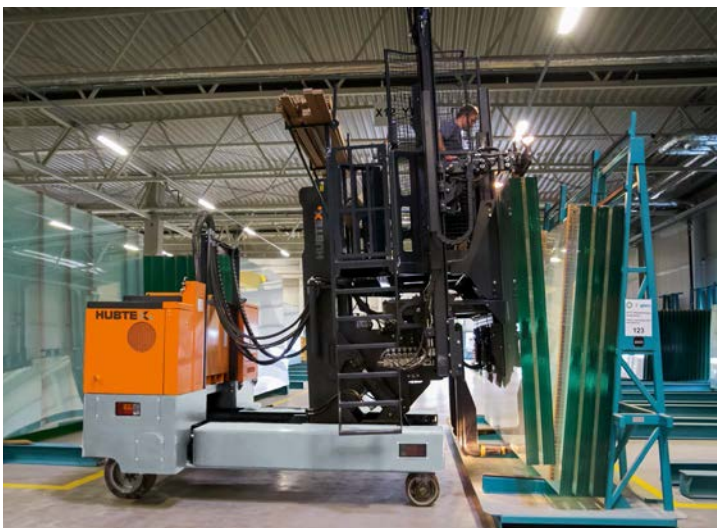




---

### Systems for aircraft production

It does not matter if it is an assembly platform, multidirectional sideloader or electric tractor – famous aircraft constructors use partially or completely optimised vehicles produced by HUBTEX in different phases of the value creation chain.



---

### Glass transport systems

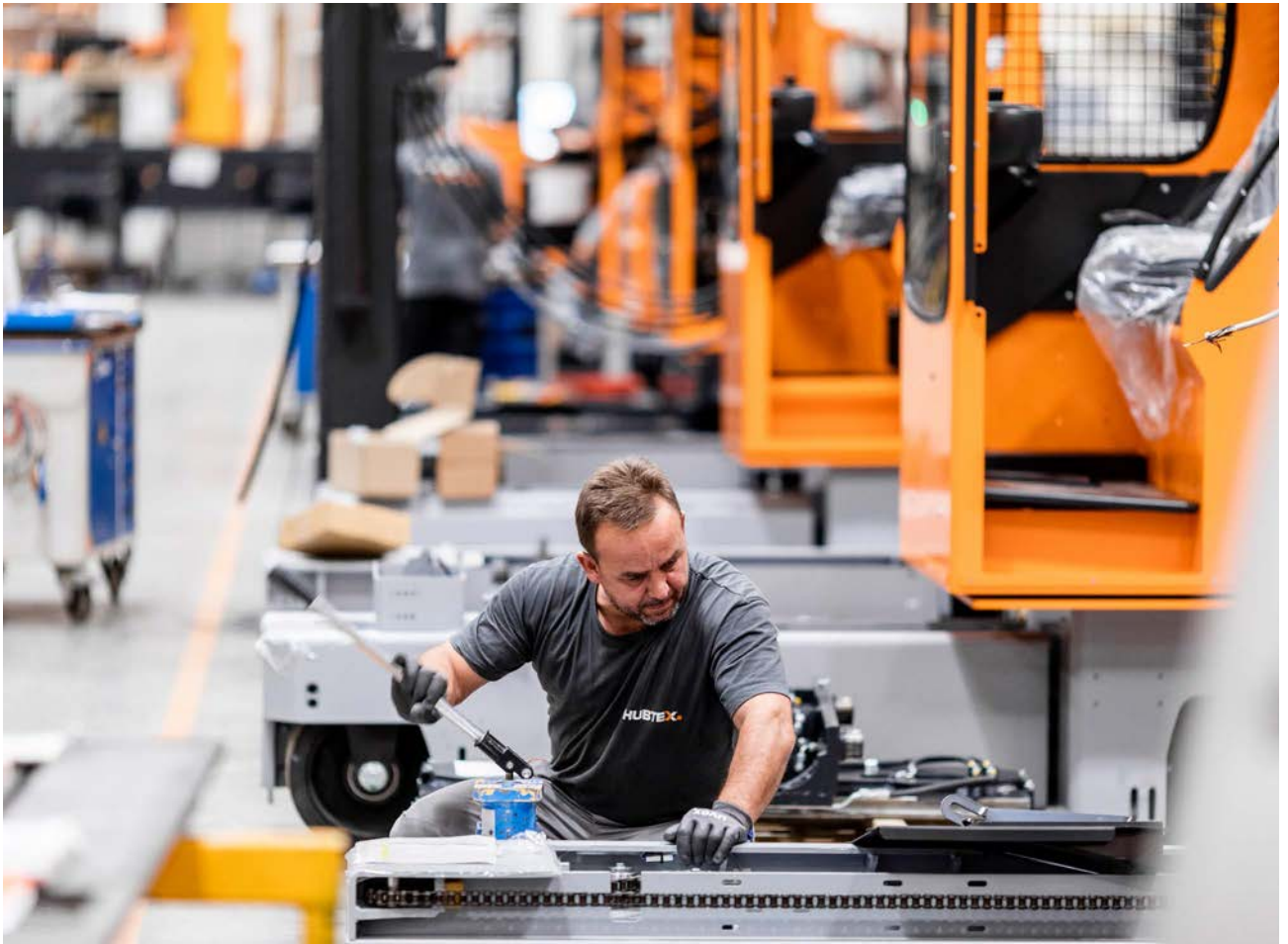
HUBTEX offers clients in the flat glass industry from all over the world non-comprising, innovating and reliable solutions in the field of the transport of whole racks, glass packages or single glass plates. In this context, we focus on the manufacture using prefabricated components by looking back at decades of proven technology.



---

### Special vehicles

Apart from standard solutions, the company HUBTEX also develops special vehicles, which are tailor-made to meet customers' requirements. This way we can guarantee an absolutely safe transport even for unconventional loads of any kind, in a variety of different storage environments.



**IN A PRODUCTION AREA  
OF 16.200 SQM WE  
PRODUCE ONLY TAILOR-  
MADE APPLIANCES TO  
MEET ALL CUSTOMERS'  
REQUIREMENTS**

Our production site in Fulda has its own lift mast production, a paint shop and modern laser and crane technology. Thanks to the efficient group production we are able to combine the know-how, to continuously and constantly improve the quality standard. In recent years, HUBTEX extended its production area and modernised the complete production. In this context we have mainly extended the production area for special vehicles.



Whether  
reparation,  
upgrade,  
maintenance

# WITH US YOUR MACHINE IS IN THE BEST HANDS

For every problem there is a solution!  
Many years of experience and highly motivated employees guarantee a rapid commissioning and a maximum level of availability of the vehicles.  
Regular inspections and maintenance concepts we guarantee a continuous operability of HUBTEX vehicles.  
Drive safety? Of course!  
This ensures safety, a long life cycle and insures the warranty claim.  
No problem for the HUBTEX maintenance workshop saves your time and money. So the vehicles are ready to use within a short time.

WHO KNOWS  
HUBTEX  
APPLIANCES  
BETTER THAN **US**?





IN A PRODUCTION AREA  
OF 16.200 SQM WE  
PRODUCE ONLY TAILOR-  
MADE APPLIANCES TO  
MEET ALL CUSTOMERS'  
REQUIREMENTS

Our production site in Fulda has its own lift mast production, a paint shop and modern laser and crane technology. Thanks to the efficient group production we are able to combine the know-how, to continuously and constantly improve the quality standard. In recent years, HUBTEX extended its production area and modernised the complete production. In this context we have mainly extended the production area for special vehicles.

# WITH US YOUR MACHINE IS IN THE BEST HANDS



---

# Whether reparation, upgrade, maintenance

---



### For every problem there is a solution!

Many years of experience and highly motivated employees guarantee a rapid commissioning and a maximum level of availability of the vehicles.

### Regular inspections

Thanks to individually adapted maintenance concepts we guarantee a continuous operability of the HUBTEX vehicles.

### Original spare parts? Of course!

This ensures safety, a long life cycle and insures the warranty claim.

### Is a reparation on site too extensive?

No problem! The HUBTEX maintenance workshop saves your time and money. So the vehicles are ready to use within a short time.

**WHO KNOWS  
HUBTEX  
APPLIANCES  
BETTER THAN US?**



HUBTEX is active worldwide and sells products in over 60 countries.  
The delivery of customer-made vehicles and solutions like reliable services for the respective target markets  
is the main principle of the corporate philosophy of the company HUBTEX.



# HUBTEX.

WE CREATE THE UNIQUE

---

HUBTEX MASCHINENBAU GMBH & CO. KG · Industriepark West · Werner-von-Siemens-Str. 8 · 36041 Fulda, Germany  
Tel.: +49 661 8382-0 · Fax: +49 661 8382-120 · [info@hubtex.com](mailto:info@hubtex.com) · [www.hubtex.com](http://www.hubtex.com)