

TIMBER TRANSPORT



MACHINES AND APPLICATIONS
IN THE TIMBER INDUSTRY

www.hubtex.com

HUBTEX.
WE CREATE THE UNIQUE



The right handling solution for the timber industry

➤ **TIMBER TRANSPORT**

HUBTEX supplies multidirectional sideloaders and order-picking systems to timber wholesalers, sawmills, wood-processing companies, kitchen manufacturers, prefabricated house manufacturers and many other companies all over the world.

The loads to be transported include chipboard, décors, glued wood constructions, finished timbers along with kitchen worktops, doors etc.

HUBTEX REFERENCE

GROEN & JANSSEN – ELECTRIC MULTIDIRECTIONAL SIDELOADER

“We chose the HUBTEX multidirectional sideloaders due to the comprehensive advice and support,” says Renko Schoon, project manager of timber wholesaler and retailer Groen & Janssen GmbH. By moving from front to multidirectional sideloaders, Groen & Janssen was able to fit the two new warehouses with particularly narrow aisles and high shelves, thereby maximising the space utilisation level without sacrificing the quality of the warehousing.



Multidirectional sideloader

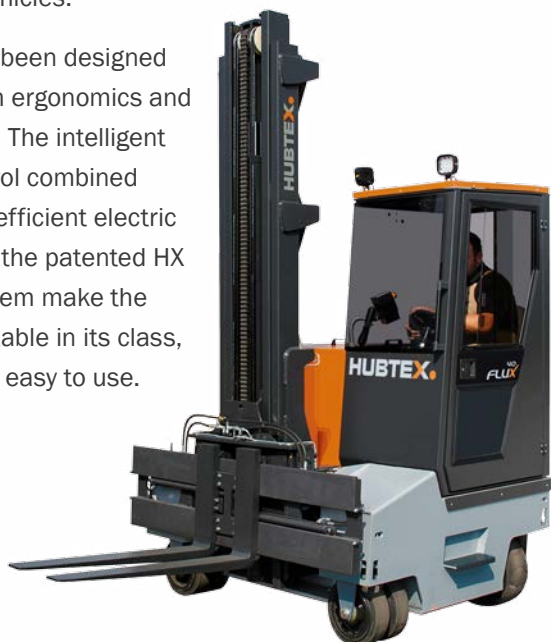
HUBTEX has designed its multidirectional sideloaders for timber handling in combined indoor and outdoor applications. Large and heavy wooden boards as well as products susceptible to breakage are transported safely by the sideloaders. Their compact size makes the vehicles suitable for use in narrow aisles. Companies can increase their storage capacities through the space-saving handling of wood materials.



➤ ELECTRIC MULTIDIRECTIONAL COUNTERBALANCE FORKLIFT

With the FluX, HUBTEX has come up with a multidirectional counterbalance forklift for the universal handling of pallets and long goods. The special features of the FluX are its compact frame length and the fixed mast. This makes the forklift ideal for loading and unloading vehicles.

The cab has been designed for maximum ergonomics and a 360° view. The intelligent vehicle control combined with energy-efficient electric engines and the patented HX steering system make the truck unbeatable in its class, efficient and easy to use.



➤ ELECTRIC MULTIDIRECTIONAL SIDeloader (3-WHEEL)

The models DS 27 and DQ 30 E with load capacities up to 3000 kg form the entry-level variant of electric multidirectional sideloaders with elastic tyres for combined indoor and outdoor use. As real universal loaders with multidirectional steering designed for the handling of pallets, long goods and medium-heavy loads in narrow aisles, they come into their own in small to medium stock handling.





➤ ELECTRIC MULTIDIRECTIONAL SIDELOADER

With their modular design and up to 25 tonnes load capacity, the multi-directional sideloaders with electric drive can be adapted individually to almost any of our customers applications.

Our advisers work hand in hand with our customers to develop the best vehicle configuration to meet their requirements. From the base unit, to vehicles with assistance systems, or a fully-automated transport system, this vehicle range can be adapted to almost any application scenario in either narrow-aisle racking systems or free range operation.



➤ DIESEL-/GAS FOUR-WAY SIDELOADER

The fourway sideloaders powered by either diesel or gas and their all wheel drive are particularly suitable for external use in the timber processing industry. The new generation DQ-X boasts significantly reduced consumption and up to 30% reduced emissions compared to its predecessor. Clear-view lifting mast and compact fork carriage mean the driver has an unrestricted view at all times. With the newly developed steering, tight turning circles can be achieved and the switch from longitudinal to transverse drive made quickly.

Order picking in the timber industry

Whether manual, semi-automatic or fully automatic – there is no single solution for picking sheet materials. The introduction of a new picking solution therefore always involves a detailed consultation with a comprehensive analysis of the overall storage processes to find the right solution for the complex process of order picking and to keep damage to a minimum.

➤ ELECTRIC MULTIDIRECTIONAL SIDeloader WITH REMOVABLE ORDER PICKING PLATFORM KP SERIES



The classic electric multidirectional sideloader in its basic configuration is designed for handling long loads in narrow aisles.

For use as a picking vehicle, the multidirectional sideloader can be quickly and cost-effectively supplemented by a fast-mounting platform. The operator then controls the system from the platform. The sheets are picked by another operator and placed directly onto the vehicle by hand. This order picking truck can be used for one-sided shelf operation with medium handling services in narrow aisles.



HUBTEX REFERENCE

FRISCHEIS – Electric-multidirectional sideloader MQ 70 with removable picking platform

The maximum ability to deliver an efficient ordering service are the top priority for Andreas Winkler, branch manager of J. u. A. Frischeis GmbH in Austria. HUBTEX supplied two inductively guided electric multidirectional sideloaders with a quick-assembly picking platform.

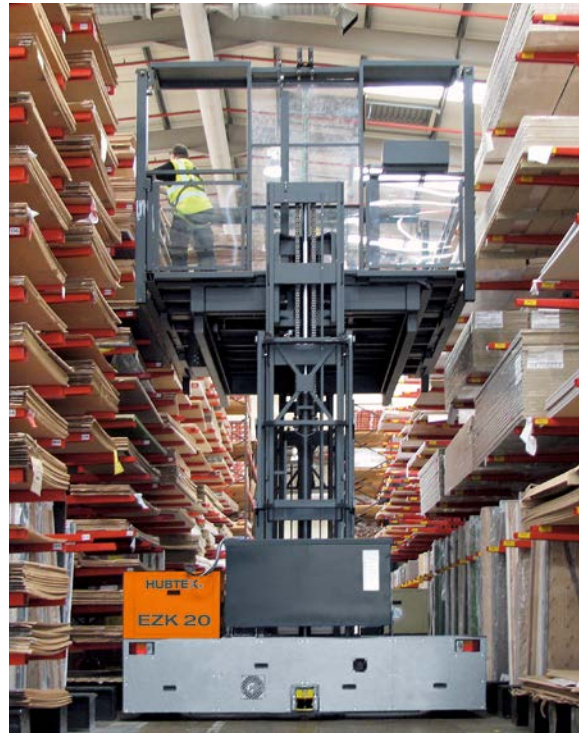
“The removable platform gives us excellent flexibility and an optimal fleet for every order situation,” says Winkler.





➤ **ELECTRIC DOUBLE-SIDED ORDER-PICKING PLATFORM MK SERIES**

The function of the MK model is for warehousing and order picking of doors and panels stored in pallet racks. This picking platform is a classic electric multi-directional sideloader with man-up cab.



➤ **ELECTRIC DOUBLE-SIDED ORDER-PICKING PLATFORM WITH 2-MAST OR SCISSOR LIFT EZK SERIES**

HUBTEX offers the order picking platforms EZK, the special feature of which is the two-sided shelf operation, for high handling capacities.

Whether in the low 2-mast or scissor-lift version with short frame length, the picking vehicle comes, depending on the application, with a host of equipment variants, for example, for positioning the vehicle in the aisle or centring and strapping the goods for further transport.

➤ *Telescopic tables (optional)*

for handling full packages and delivering the finished picked goods.





➤ VACUUM SUCTION TECHNOLOGY **VACUMAX**

To further reduce damage to the materials, both versions can be supplemented with the vacuum suction device VacumaX. Extendible suction pads extract individual sheets from the shelf compartment and then set them down on the vehicle. The use of vacuum suction technology means heavy loads can be safely moved and material damage minimised. If there is dust on one of the sheets, this can be removed using the integrated blow-off device at the push of a button. In addition, this technology provides the basis for (partial) automation of the vehicles.

HUBTEX REFERENCE

KRONO SWISS AG

Kronospan Schweiz AG uses the order-picking platform EZK 35, with Vacumax, for the semi-automatic picking of high-quality chipboards. Michael Hofstetter, the project manager of Kronospan, is convinced: "The HUBTEX picking platform means our high-quality products are transported more gently, employees are exposed to less physical stress and the throughput times in the picking hall are shortened."



HUBTEX SECTORS

ALUMINIUM › AUTOMOTIVE › AVIATION › BUILDING MATERIALS › COIL › DRUM › FOOD › FOUNDRY › GLASS
METAL › PAPER › PLASTIC › CONTAINER › TEXTILES › TYRES › WIND POWER › WOOD

HUBTEX.

WE CREATE THE UNIQUE

HUBTEX MASCHINENBAU GMBH & CO. KG · Industriepark West · Werner-von-Siemens-Str. 8 · 36041 Fulda, Germany
Tel.: +49 661 8382-0 · Fax: +49 661 8382-120 · info@hubtex.com · www.hubtex.com