

# DIESEL, GAS FOURWAY SIDE LOADER

**POWERFUL,  
ENERGY-EFFICIENT  
DRIVE**



LOAD CAPACITIES OF UP TO 4.5 TONS  
LIFT HEIGHTS UP TO 7500 MM

[www.hubtex.com](http://www.hubtex.com)

**HUBTEX.**

WE CREATE THE UNIQUE

# **DQ-X**

# **FOR DEMANDING OUTDOOR APPLICATIONS**

## **POWERFUL DRIVE**

With the DQ-X, HUBTEX introduces a new generation of all-wheel fourway forklifts for both indoor and outdoor use.

The driver is at the forefront of the new development. The cabin is designed for optimum ergonomics and the more compact masts and fork carriages provide all-round visibility. An intelligent truck controller combined with the latest engine technologies minimises noise, exhaust emissions and energy consumption.

The truck can be used in a wide range of applications for transporting long goods in narrow aisles or as a conventional front loader for pallet and block stacking.

# A detailed look at the fourway sideloader

- *Three in one:  
Front loader, sideloader, fourway forklift*
- *Load capacities of up to 4.5 t*
- *Powerful diesel or gas engine*
- *Energy-saving Eco mode available*
- *All-wheel drive*
- *Tighter turning radii*
- *Optimum all-round visibility*
- *Compact lift mast*



## Properties

Load capacity (t)	4,5
Lift height (mm)	up to 7500
Frame length (mm)	2450
Frame	3-wheel
Tyres	Super elastic
Motorisation	Diesel / LPG
Speed (km/h)	13
Cabin	Transverse seat

---

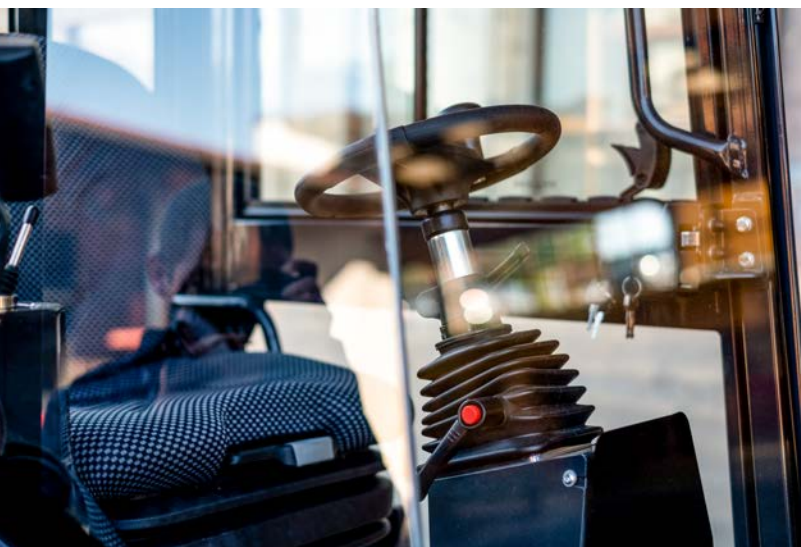
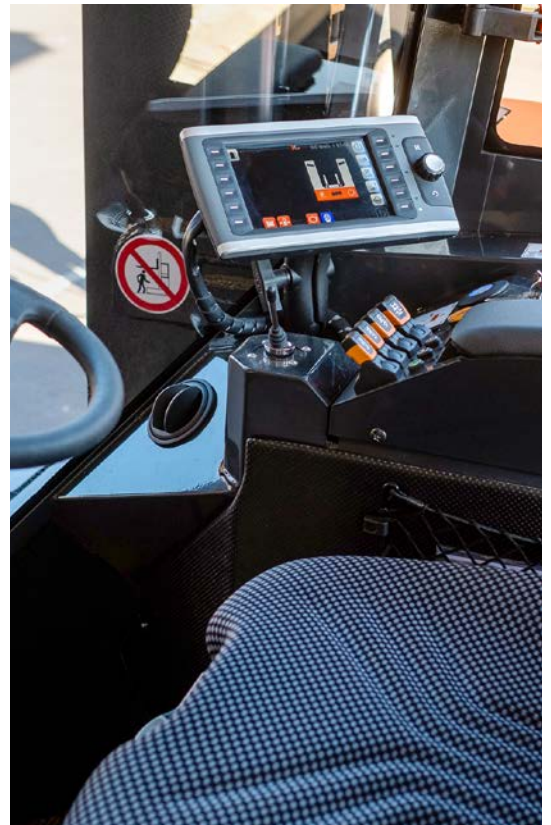
# Improved comfort and better visibility

---

## ➤ CABIN

The larger cabin offers the driver the greatest possible comfort and freedom of movement. All truck data is clearly presented on a colour display.

The large display informs the driver about the wheel position and all important operating conditions. The hydraulic functions are conveniently operated using fingertips only. The arrangement of the glass panes makes annoying reflections a thing of the past.



*Depending on the application, you can switch between the three driving modes Eco, Sensitive and Speed. This can reduce exhaust emissions and fuel consumption.*

---



*The innovative stabilisation assistant prevents unwanted rocking movements when braking hard.*

## ➤ OPTIMUM ALL-ROUND VISIBILITY

The improved cabin design provides optimal all-round visibility. The driver has a significantly larger range of vision than comparable competitor models. Ergonomic control using fingertips and the travel direction switch enables quick and convenient operation.

## ➤ FORK CARRIAGE AND LIFTING MAST

The lifting mast and fork carriage have been specially developed for this series. The main focus of development was on improving the visibility of the load. This has resulted in very compact lifting masts and fork carriages.



## ➤ ENGINE

The DQ-X impresses with its particularly energy-efficient engine.

Thanks to the combination of intelligent engine control, pumps and fans, the new truck is the first of its kind to offer an energy-saving Eco mode. This can reduce fuel consumption by 30 percent. As an added bonus, noise has been reduced to a minimum.



*Reduced-noise turbo engine in line with the current emissions standard*

---



*The parking brake is automatically activated when changing direction.*

---

## ➤ STEERING SYSTEM

The innovative steering mechanism has a steering angle that is 20° larger than comparable previous models. This enables the DQ-X to navigate a significantly tighter turning circle. In addition, the switching times from longitudinal to transverse travel have been significantly reduced.

When driving normally, the time it takes to change direction is reduced by up to 40 percent. These optimisations enable a significantly faster turnover of goods as well as improved manoeuvrability.

---

*The mast end position damping enables precise retraction and prevents vibrations.*



## HUBTEX VEHICLES

---

ELECTRIC-MULTIDIRECTIONAL-SIDELOADERS › DIESEL-/GAS-FOUR-WAY-SIDELOADERS › MULTIDIRECTIONAL COUNTERBALANCE FORKLIFT › ORDER PICKING SYSTEMS › GLASSTRANSPORT SYSTEMS › HEAVY DUTY TRANSPORT VEHICLES › REACH TRUCKS › SPECIAL TRUCKS › SECOND-HAND-AND RENTAL EQUIPMENT

---

# HUBTEX.

WE CREATE THE UNIQUE

---

HUBTEX MASCHINENBAU GMBH & CO. KG · Industriepark West · Werner-von-Siemens-Str. 8 · 36041 Fulda, Germany  
Tel.: +49 661 8382-0 · Fax: +49 661 8382-120 · [info@hubtex.com](mailto:info@hubtex.com) · [www.hubtex.com](http://www.hubtex.com)