

# ELECTRIC MULTI DIRECTIONAL SIDELOADER

FOR OUTDOOR APPLICATIONS

THE NEW **MSL<sup>50</sup>** –  
POWERFUL,  
ERGONOMIC  
AND IDEAL FOR  
LONG DISTANCES



LOAD CAPACITIES UP TO 5 TONNES  
LIFT HEIGHTS UP TO 10,000 MM

[www.hubtex.com](http://www.hubtex.com)

**HUBTEX.**  
WE CREATE THE UNIQUE

---

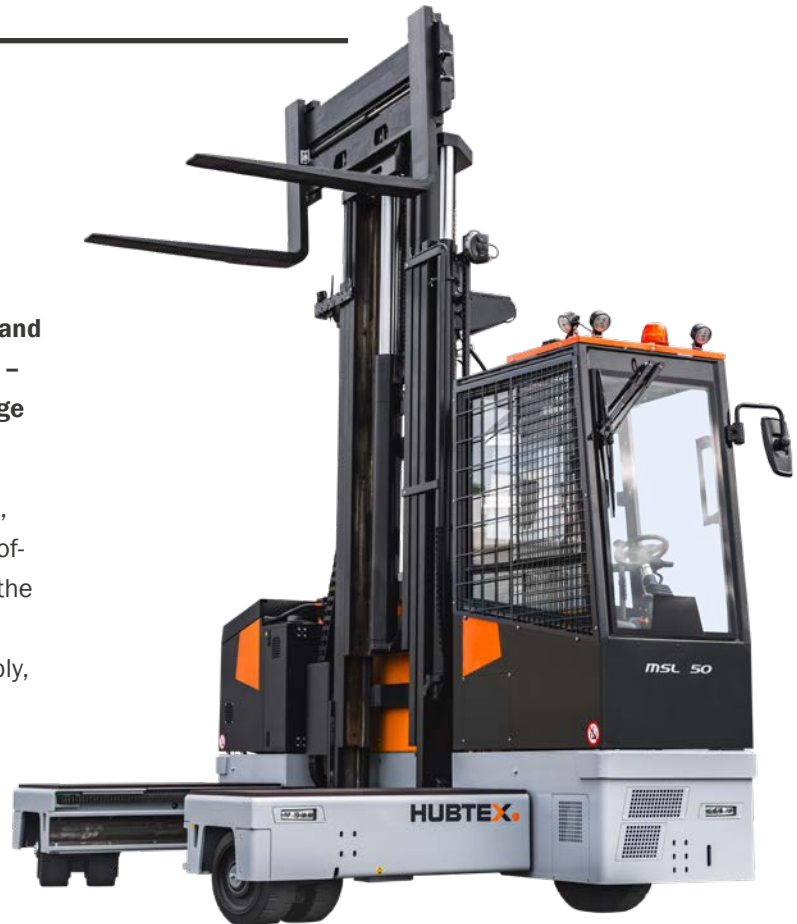
# **MSL** – Electric Multidirectional sideloader for outdoor use

---

## ➤ POWERFUL, COMFORTABLE AND CONSISTENT

The MSL 50 is robustly constructed, designed for loads of up to 5 tonnes and equipped with the ergonomic SL cab – ideal for long transport routes on large company premises.

Thanks to its well thought-out features, generous all-round visibility and state-of-the-art control technology, the MSL is the ideal solution for anyone who wants to move heavy and long loads comfortably, safely and efficiently.



Features	MSL 50
Load capacity (t)	5.0
Working width NB (mm)	1000 to 2100
Lift height (mm)	up to 10000
Frame length (mm)	4300
Frame height (mm)	535
Load arm opening (mm)	1960
Tyres	EL
Battery (V)	80
Cabin	SL

# Optimally & comfortably equipped

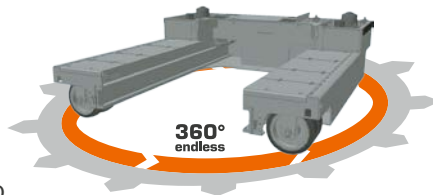
## ➤ MODULAR & ROBUST FORK CARRIAGE

**Standard fork carriage**  
**Type I** (length 1800 mm)

**Spreaded fork carriage**  
**Type III** (length 4000 mm)

## MULTIDIRECTIONAL STEERING SYSTEM

Both the multidirectional steering system and the optional HX steering ensure maximum manoeuvrability and up to 50 % more storage capacity. The HX steering also enables seamless switching between the driving modes – for particularly fast and efficient manoeuvres.



## ➤ TYRES FOR ANY TERRAIN

Whether smooth concrete surfaces or uneven outdoor areas – the elastic tyres ensure optimal traction and protect both the vehicle and driver at the same time.



**FIND MORE FEATURES IN  
THE PHOENIX BROCHURE.**



## ➤ SL CABIN – COMFORTABLE DRIVING WITH MAXIMUM VISIBILITY

The newly developed SL cabin ensures a high level of comfort and optimum visibility in the main direction of travel, especially for long distances. The deep-drawn windscreen offers a clear view to the front, while the large side window provides a good view on the load.



## Operation of the hydraulic functions with joystick

All hydraulic functions as well as the preselection of the driving direction are controlled smoothly and with perfect precision using a joystick developed by HUBTEX.

The required movements such as lifting, lowering, mast reach, fork tilt and fork adjustment can be operated quickly and safely without repositioning your hand.

## HUBTEX VEHICLES

ELECTRIC-MULTIDIRECTIONAL-SIDELOADERS › MULTIDIRECTIONAL COUNTERBALANCE FORKLIFT › ORDER PICKING SYSTEMS › GLASSTRANSPORT SYSTEMS › HEAVY DUTY TRANSPORT VEHICLES › REACH TRUCKS › SPECIAL TRUCKS › SECOND-HAND AND RENTAL EQUIPMENT

# MORE HUBTEX SOLUTIONS AT A GLANCE



**FLUX**  
FORKLIFT AND  
SIDELOADER  
IN ONE TRUCK



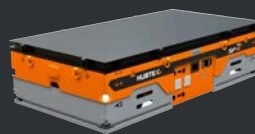
**PHOENIX**  
MULTIDIRECTIONAL  
SIDELOADER  
CUSTOMISED FOR  
EVERY APPLICATION



**MAXX**  
MULTIDIRECTIONAL  
SIDELOADER  
ECONOMICAL  
ALTERNATIVE TO  
DIESEL FORKLIFTS



**ROXX**  
HEAVY DUTY  
COMPACT FORKLIFT  
MINIMUM SPACE  
REQUIREMENT



**SFX**  
PLATFORM  
TRANSPORTER  
INDIVIDUAL, HEAVY-  
DUTY AND COMPACT

# HUBTEX.

WE CREATE THE UNIQUE